

MATERIAL IN A THEMATIC PHILATELY EXHIBIT Some Guidelines

FIP Seminar

Bandung, August 5, 2017

Tono Dwi Putranto

FIP Thematic Commission

THE THEMATIC EXHIBIT

*has **two** essential properties:*

*1. It describes a **story***

*2. The story is illustrated with
**appropriate philatelic material in its
postal aspects***

The material should be selected according to

A) PHILATELIC CRITERIA

POSTAL aspects of philatelic material

(no private prints or markings!)

B) THEMATIC CRITERIA

LINKED to the theme or development

C) PHILATELIC VARIETY AND QUALITY

A WIDE variety and BEST quality



D. Bačević,
"Blagovijest",
(JM 2580)



N. Nešković,
"Rođenje Hristovo",
(JM 2581)



T. Kračun-Dimitrijević,
"Hristovo krštenje",
(JM 2583)



T.J. Češljar,
"Bogorodica i Hristos",
(JM 2582)

NO STORY

An old "motive" exhibit



Frederiko Benković
"Abrahamova žrtva"
(JM 2979)



"Hristovo rođenje", manastir
Hilandar na Atošu, 17.st.
(JM 2990)



Hristofor Zefarović
"Jakovljeve ljestve"
(JM 2981)

NO VARIETY!



T. Kračun-Dimitrijević
"Voznesenje Hristovo",
(JM 1278)



František Jelovšek
"Sveta obitelj"
(JM1280)



Tripo Kokolja, "Krunisanje
Majke božje"
(JM1283)

NOT THEMATIC!

4.0. RIJETKE I ZAŠTIĆENE VRSTE PTICA (EZO i WWF)

ZAŠTITA PRIRODE



Priljepak
(JM 1338)



Galica crvenokljuna
(JM 1340)



Buljina
(JM 1342)



Alpska koka
(JM 1342)



Ševa
(JM 2608)



Vuga
(JM 2508)



Kreja
(JM 2509)

Mala droplja
(JM 1339)



Liska
(JM 718)

Orao ribar
(JM 1987) ↓

Pupavac
(JM 1988) ↓



Šumska šljuka
(JM 722)



Velika droplja
(JM 720)

Still no story ...

*... but at least two
types of material ...*

ZAŠTITA PRIRODE

2.5. N.P. TRIGLAV

Triglav, planinska grupa Julijskih Alpa s istoimenim vrhom (2863m), najvišim u Sloveniji. Proglašen je Nacionalnim parkom 1981 godine. ➡



Uspon na Triglav izvršen je po prvi put 1778 godine s Bohinjske strane. ←

Vrata Triglava
(DK 151/406) →



↑ **Aljašev dom** (na 1015 m visine) u dolini Vrata, odakle slijedi uspon sa sjeverne strane (DK 93/LJ I).



Uspon na Triglav (DK93 / LJ32) →

➡ S usponom preko sjeverne strane Triglava povezan je početak alpinizma u Sloveniji. 1893 godine osniva se prvo Slovensko planinarsko društvo, 1903 godine se radi alpinistička staza iz doline Vrata. ■



A thematic exhibit with a (although minimal) story

.... and some material variety

Appropriate material

A Thematic exhibit uses all kind of **philatelic material** in its **postal aspects** according to illustration, purpose of issue etc.

Guidelines:

*Appropriate postal-philatelic material is that which, for the purpose of **transmitting mail** or other postal communications, has been **issued, intended for issue, or produced in the preparation for issue, used, or treated as valid for postage** by governmental, local or private postal agencies, or by other duly commissioned or empowered authorities.*

MATERIAL

There should be as much variety as possible
(both within the whole exhibit and on the single sheet)!

- In the **TYPE** of material:

Stamps, cancellations, postal stationery, covers, proofs...

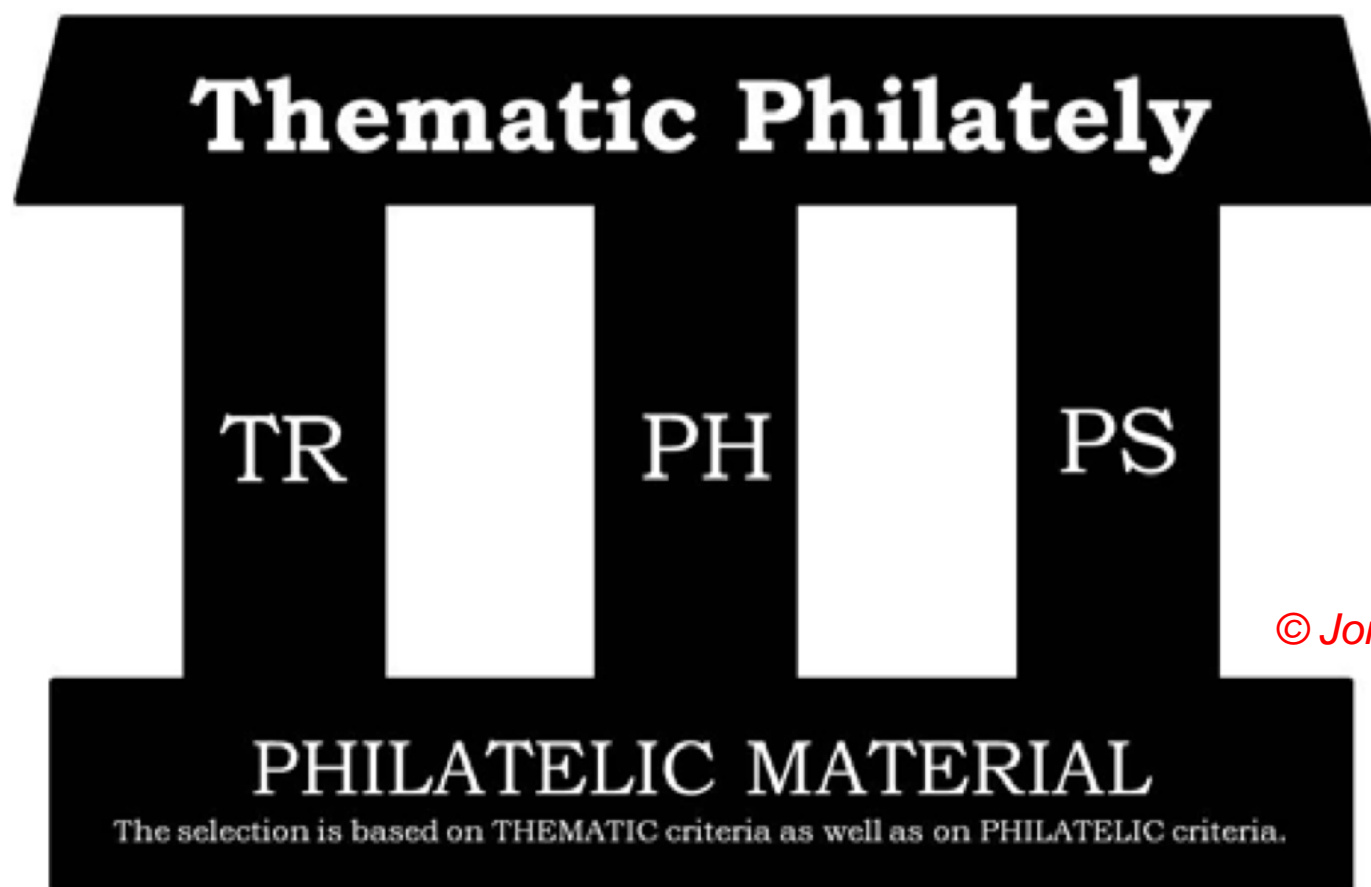
- **Spatial:**

Material from ALL OVER the world

- **Temporal:**

Material from ALL PERIODS from pre- to modern-philately

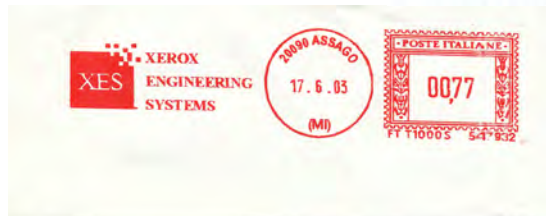
THE PILLARS OF THEMATIC PHILATELY



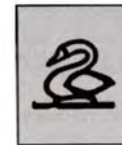
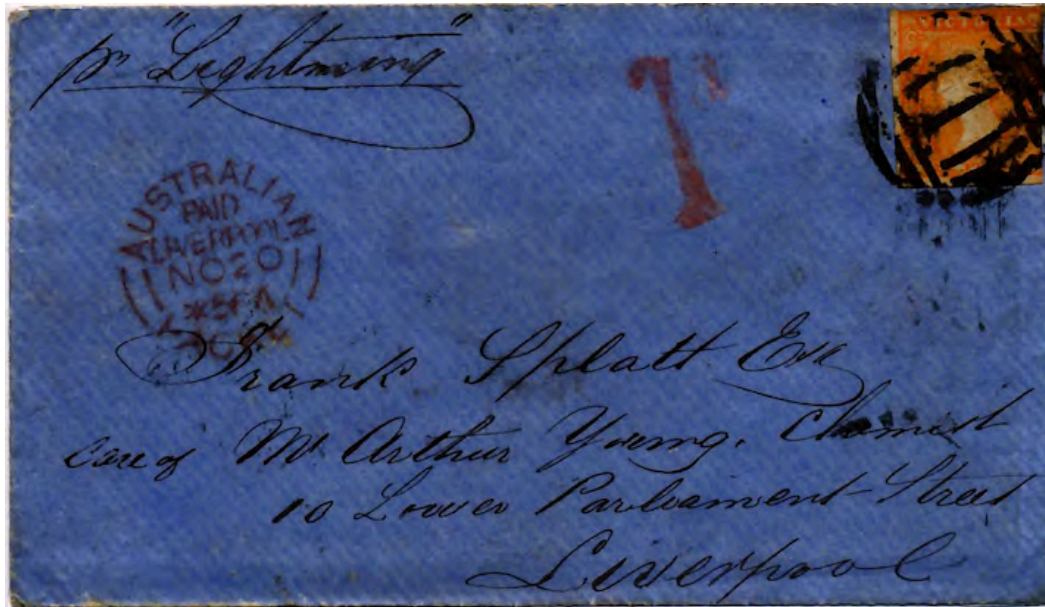
© Jonas Hällström

The material in a thematic exhibit is mainly that used within these three FIP classes

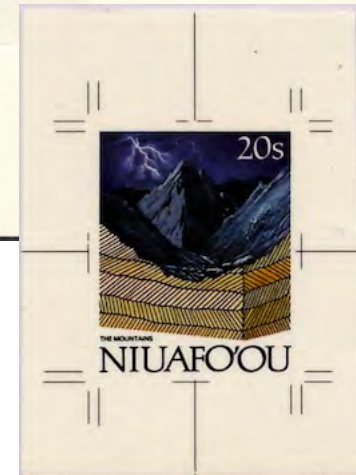
STAMPS, BOOKLETS, METERMARKS



POSTAL HISTORY, WATERMARKS, PERFINs



STAMP PROOFS



ARCHIVE CARDS, STATIONERY PROOFS

Stempelbild

DÜSSELDORF -51128 1

3035

Düsseldorfer Rückversicherungs-Aktiengesellschaft

DEUTSCHES REICH 045

Francotyp: B 1235 Post: Düsseldorf 1

Firma: Düsseldorfer Rückversicherungs A.-G.

Motor: Levy Nr. 241621 22 Volt = 1/2 Ps

Übersetzung: Motor: 908 Masch.: 1008 Riemen R

Geliefert: 3.11.28

Stand des Summenzählers: 999000 Sperrung auf: 500,-

Stand des Kartenzählers: 999 angefangene Karte Nr.: 001

Plombenschlüssel (Post) gez. Nr.: 11125 Permutationsnummer: 1834

4115 6.8.30

DEUTSCHES REICH 008

0203 11.4.38

EOS

Deutscher Bestattungsverein Aktie

BREVKORT
CARTE POSTALE

SVENSK POST 10 ÖRE



Kebnekaise Lappland Kebnekaise Lapponies

BREVKORT
CARTE POSTALE

SVENSK POST 15 ÖRE

SVERIGE SUÈDE



Kebnekaise Lappland Kebnekaise Lapponies

Posteitaliane



B. Longoni (1876-1956) "Cano dall'alto"



1922 ROMA 1911 MARCONI

COMO CITTÀ DELLA SETA

MULTIPLE FRANKING LETTERS



Letters franked with multiple stamps of the same design

IMPORTANT PROOFS

Example of material of world importance



*1860 Perkins & Bacon die proof for the first stamp printed locally in Western Australia
THREE EXAMPLES ARE IN PRIVATE HANDS.*

Damian Läge

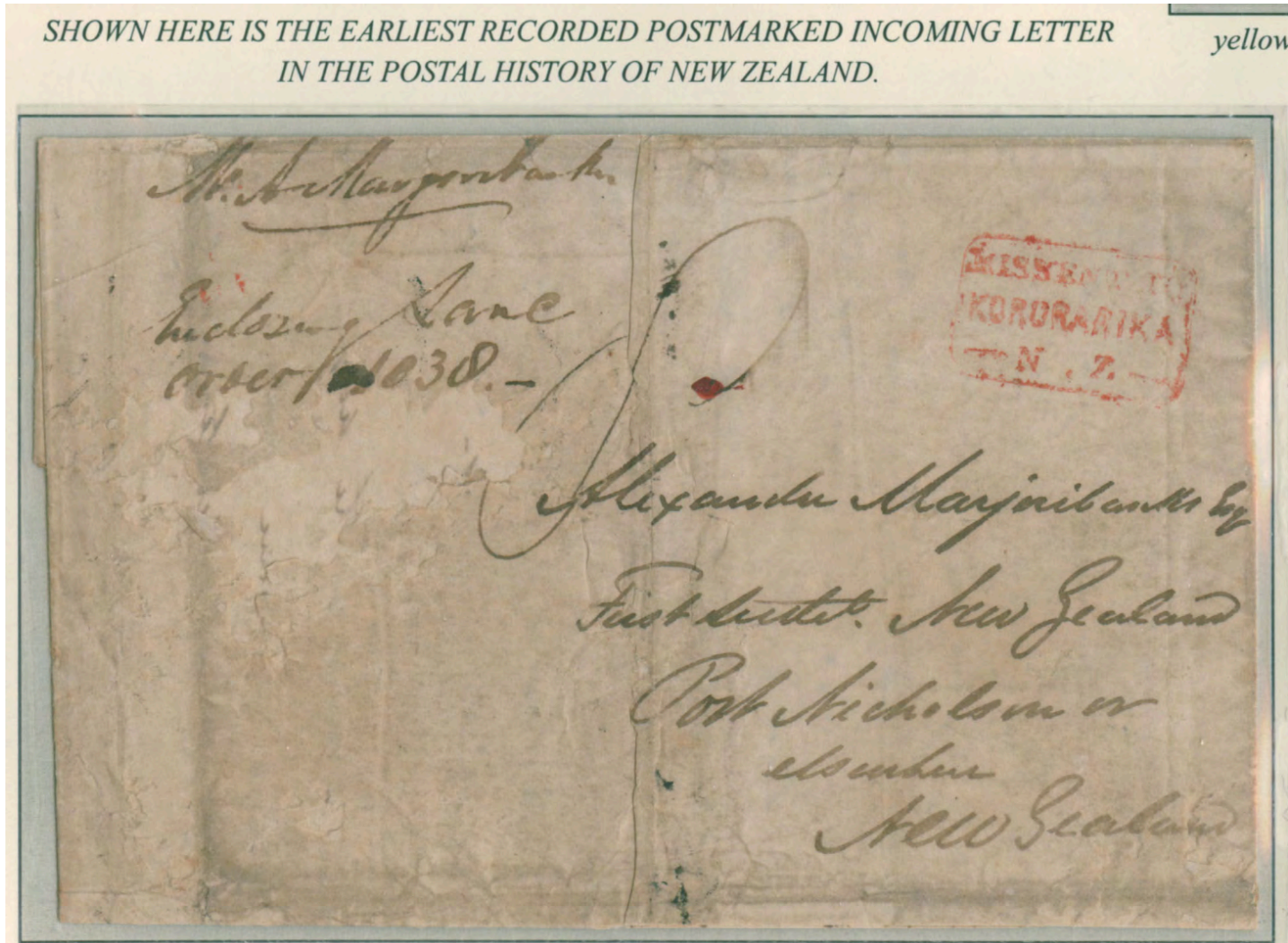
Degree of **importance** of philatelic material

- Stamps
- Postal stationery and booklets
- Other: cancellations, telegrams, frankings ...
- Artist sketches and examples of printing process*
- Examples from postal history

(*) Depends on the issuing country and printing hose (e.g. Tonga vs. House of Questa)

General importance

An example of material of world rarity



Damian Läge

Specific importance

For Bicycle



For Scouting



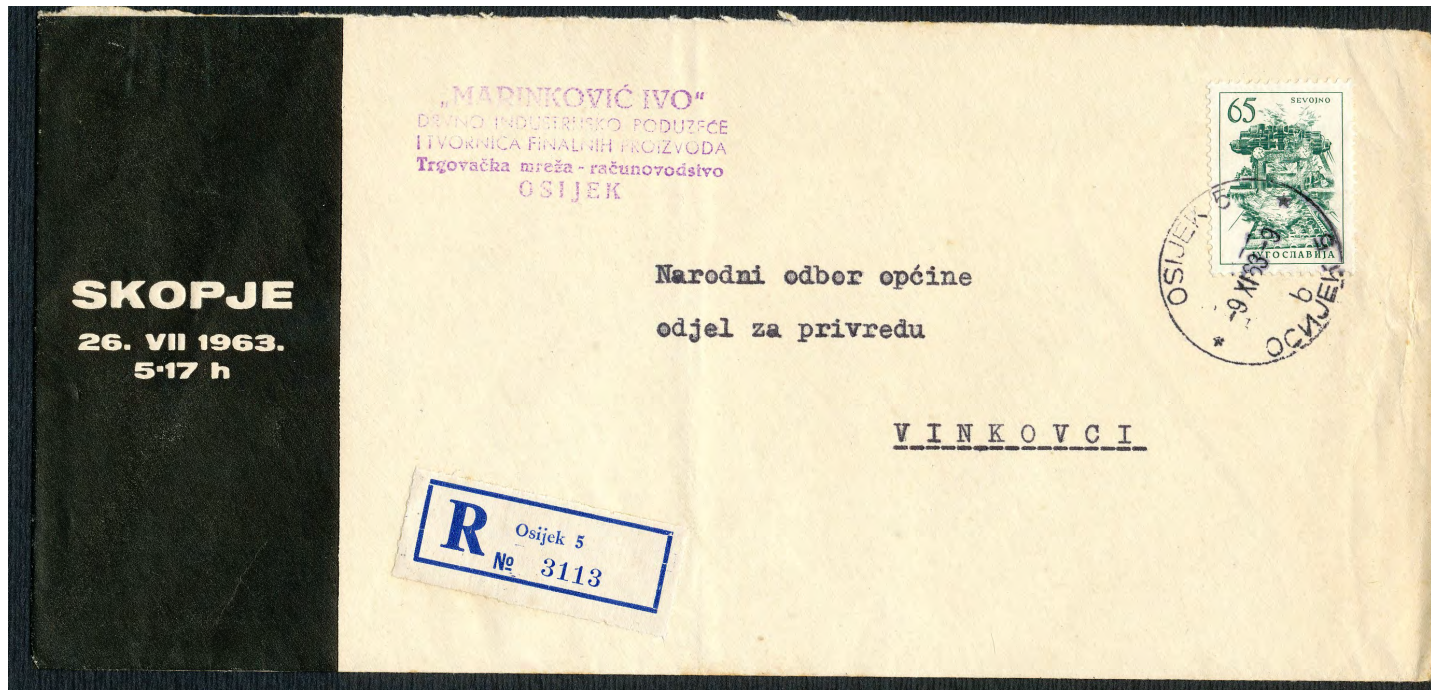
Non-postal aspects of philatelic material

Some of the most common such material:

1. Postal stationery with added private print (repiquage)
2. Illustrations on FDC
3. Revenues (when not used postally)
4. Private decorations on covers and cards
5. Private (e.g. aero-philatelic) vignettes
6. Private cancellations(e.g.Antarctic bases, research vessels)
7. Content of letters, postcards (both text and drawings)
8. Cachets or address of sender, that do not imply the privilege of free postage

Non-postal aspects of philatelic items

Example



*The print on the left (Skopje, date and hour of the earthquake)
MUST NOT BE USED in a thematic exhibit on earthquakes*

Non-postal aspects of philatelic items

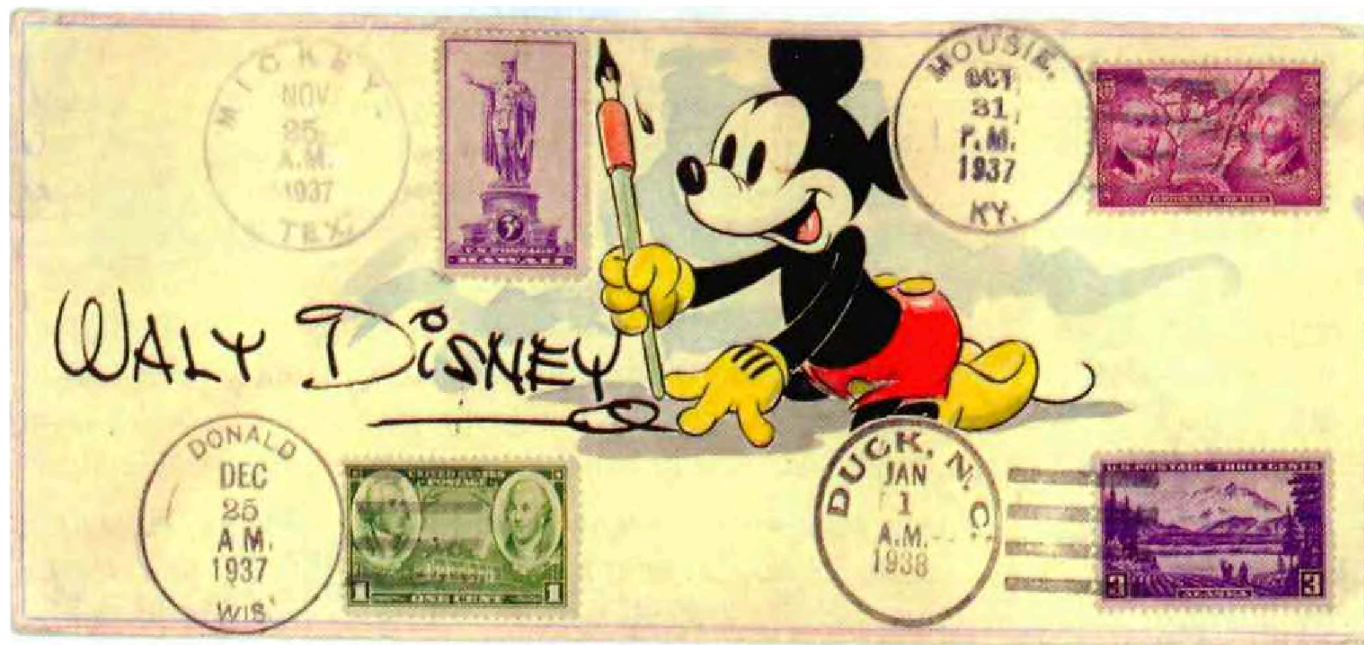
Examples



**Private prints on card
and envelope**

Non-postal aspects of philatelic items

Example



Private illustration, favor cancellations not for transmitting mail

Unappropriate material

Items, that should not be used in a thematic exhibit



French gravures



Belgian ministerial sheet

2.3. COMPOSITION OF BLOOD

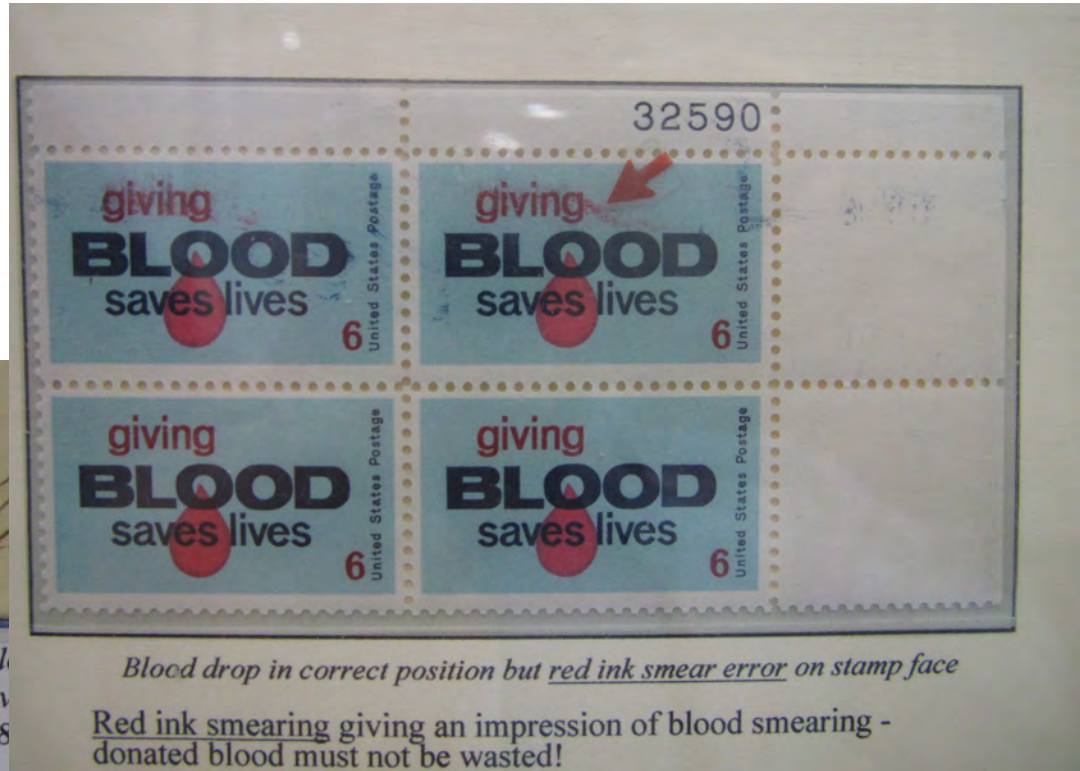
As we have seen blood circulates through the heart to all parts of the body.



DNA is a double helix chain, made up of nucleotides, within the cells chromosomes, and is the building block of all proteins and cells in the body.

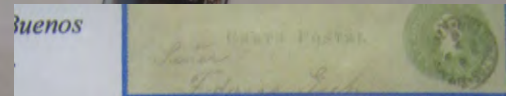
The 4 different nucleotides of DNA are paired together - Adenine with Thymine, and Guanine with Cytosine.

The DNA chain is illustrated with the QV line engraved 1d issues and the relevant position letters. The black Maltese cross links the T-A bonds, and the red Maltese cross links the C-G and G-C bonds.



Blood drop in correct position but red ink smear error on stamp face

Red ink smearing giving an impression of blood smearing - donated blood must not be wasted!



... a ship was sinking



USA, 1983, Misperforated.

It is dangerous with holes on hull & bottom. ...



Misperforated

... The best way is to move all holes away.



Imperforated

INNOVATIVE THEMATIC USE OF PHILATELIC ELEMENTS - EXCELLENT!

THANK YOU
FOR YOUR ATTENTION !!